

Figure 1

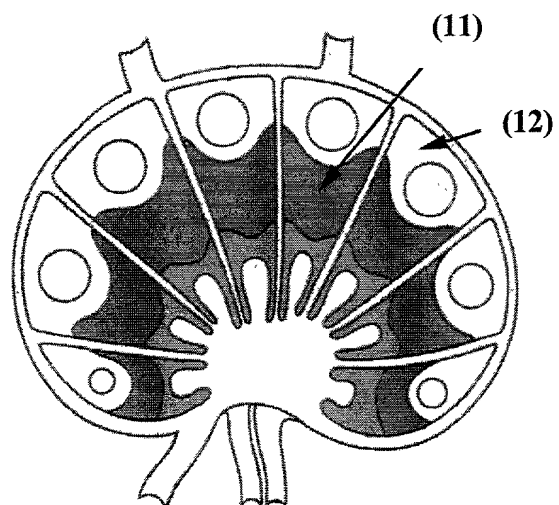
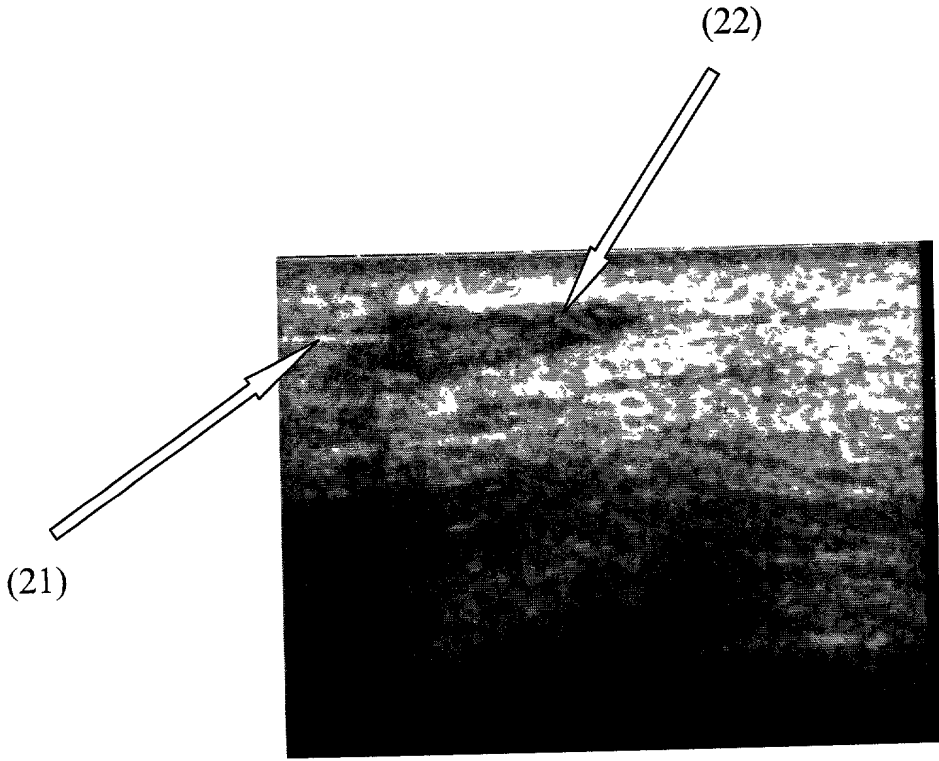


Figure 2

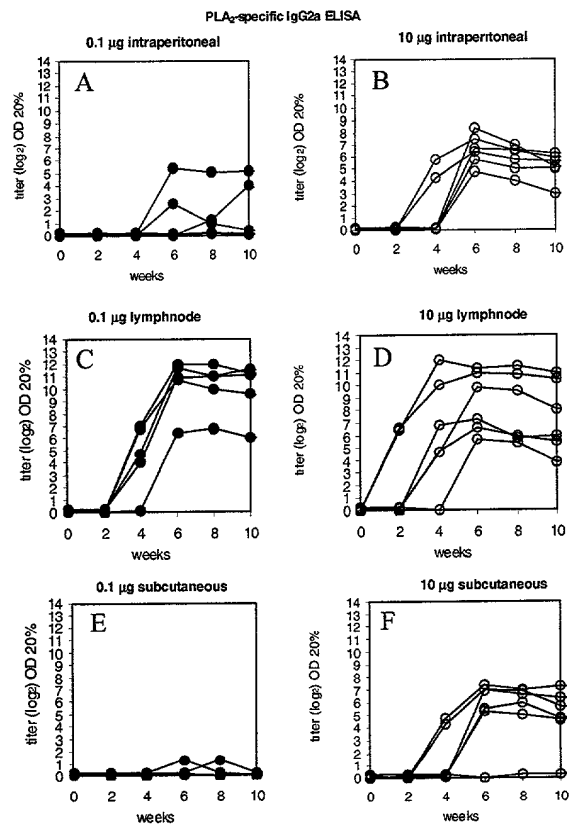


100x magnification
SEM image of a surface
with a dark feature (21)
and a bright feature (22)

Figure 4



Figure 5



PLA₂-specific IgG2a ELISA

Figure 6

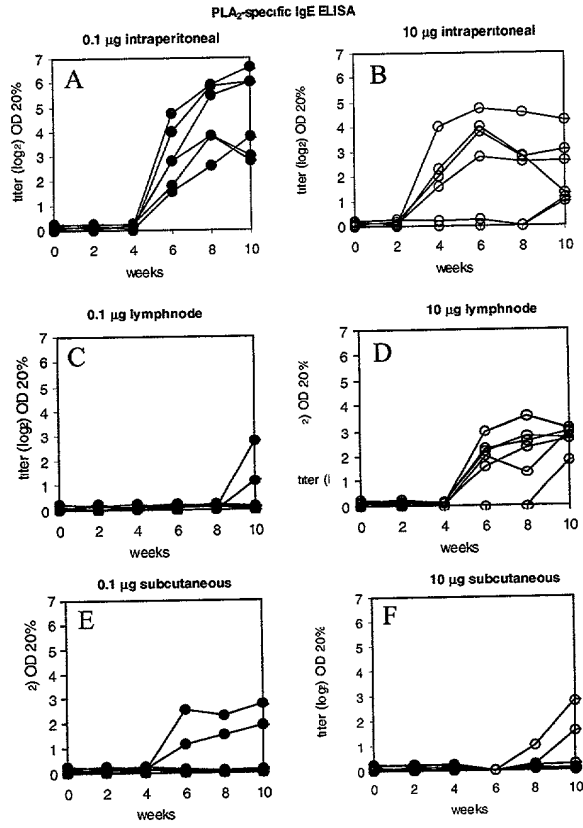


Figure 6 shows the results of the PLA₂-specific IgE ELISA. The graphs show the titer (log) OD 20% over 10 weeks for different routes and doses. The routes are intraperitoneal (A, B), lymphnode (C, D), and subcutaneous (E, F). The doses are 0.1 μ g (A, C, E) and 10 μ g (B, D, F). The x-axis represents weeks (0, 2, 4, 6, 8, 10) and the y-axis represents titer (log) OD 20% (0 to 7). The data shows that the titer increases over time for all routes and doses, with the highest titers observed in the intraperitoneal and lymphnode routes.

Figure 7

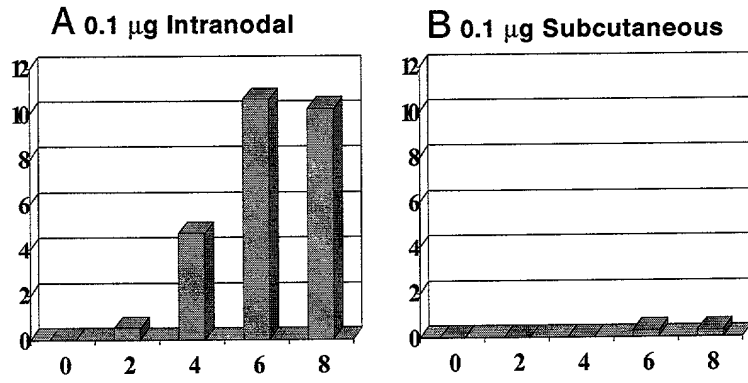


Figure 8

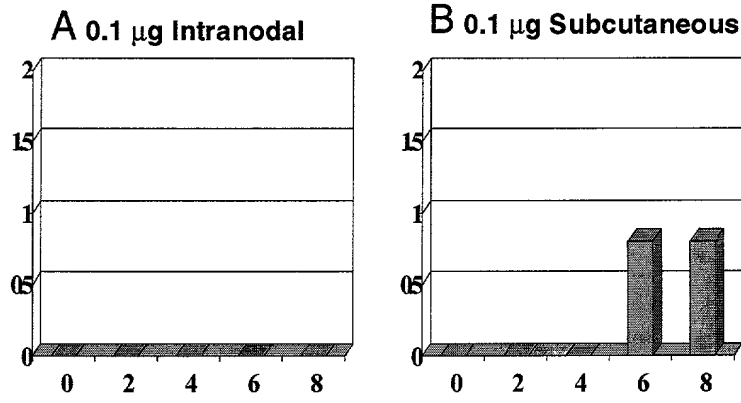


Figure 8 consists of two bar charts, A and B, comparing data over time (0, 2, 4, 6, 8) for two different treatment groups. Both charts have a y-axis ranging from 0 to 2 with major ticks at 0, 0.5, 1, 1.5, and 2. Chart A, titled 'A 0.1 µg Intranodal', shows zero values for all time points. Chart B, titled 'B 0.1 µg Subcutaneous', shows zero values for time points 0, 2, and 4, and values of approximately 0.8 for time points 6 and 8.